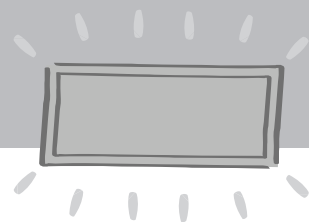


MANUAL



SM6-G/-W, SMB6-G/-W
SM6V-G/-W, SMB6V-G/-W
SM6VP-G/W, SMB6VP-G/-W



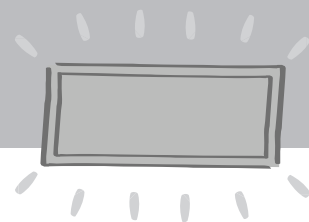
Introduction

Please read this manual before using the product in order to give you the needed product and installation instruction to assure a seamless installation and non compromised overall sound quality.

Thanks for purchasing our APart SM6 speaker, a small sized on wall speaker developed for multipurpose BGM and paging usage. The APart SM6 has been designed and engineered in our Belgian headquarters. The APart SM6 range offers you many options to ensure you have the right speaker for the right application. The design is kept deliberately discrete in order not to draw attention. A well appreciated feature for the installers is that you don't need any hardware or tools to connect the speaker wires nor to select the power tap of choice on the transformer.

Safety precaution

- Keep this manual for future reference.
- Clean only with dry cloth
- When making the hole in your ceiling to mount the APart CM4, make sure there is sufficient clearance behind the ceiling (no obstructions like A/C channels, power lines etc.,)
- Take care of your speaker wires, they should be free of damage. Damaged speaker wires might result in poor sound quality and can damage amplifiers.
- Only use accessories specified by the manufacturer
- Make sure the ceiling can support the speakers weight.
- Use sufficient amount of speakers to avoid death-spots.
- No main power shall be connected to the loudspeakers, doing so will damage the speaker.
- This apparatus should only be serviced by qualified personnel. If not warranty might be void.
- The speaker grill is fixed, removing it will damage the speaker.
- Use cable of the right gauge, certainly for long runs.
- Use cables with clear color indication and maintain polarity throughout the



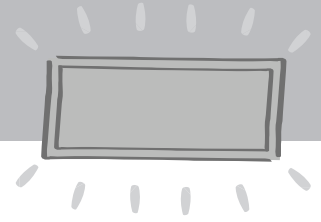
whole system.

- Avoid loud feedback from microphones, this can damage your speaker.
- Please check the units condition after unpacking. If the outside of the carton box has been damaged, inform your shipper immediately.
- Take notice that this speaker is intended for indoor use only. Do not expose the speaker to rain or moisture.

Features and benefits

MODEL	Colour	Mounting bracket	Volume control	24V priority relay	Back plate
SM6-G	grey				
SM6-W	white				
SM6V-G	grey		x		
SM6V-W	white		x		
SM6VP-G	grey		x	x	
SM6VP-W	white		x	x	
SMB6-G	grey	x			x
SMB6-W	white	x			x
SMB6V-G	grey	x	x		x
SMB6V-W	white	x	x		x
SMB6VP-G	grey	x	x	x	x
SMB6VP-W	white	x	x	x	x

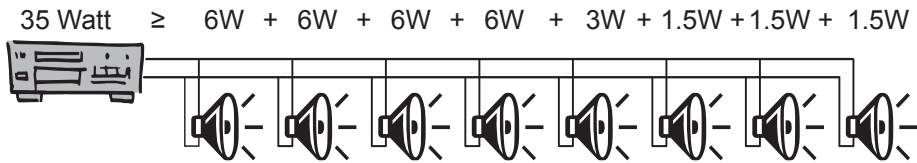
- **Screwless connector** for tool-free mounting. The connector accepts wire sections between 0.75mm² up to 2.5mm².
- Your power tap of choice can be tool-free selected.
- Removable metal grill
- Volume control is hidden on the front panel, offering you full control on the volume per individual speaker, while avoiding unwanted people to change the volume.



- Good musical sound, excellent speech intelligibility
- 24 priority entry for priority paging calls (VP models only)

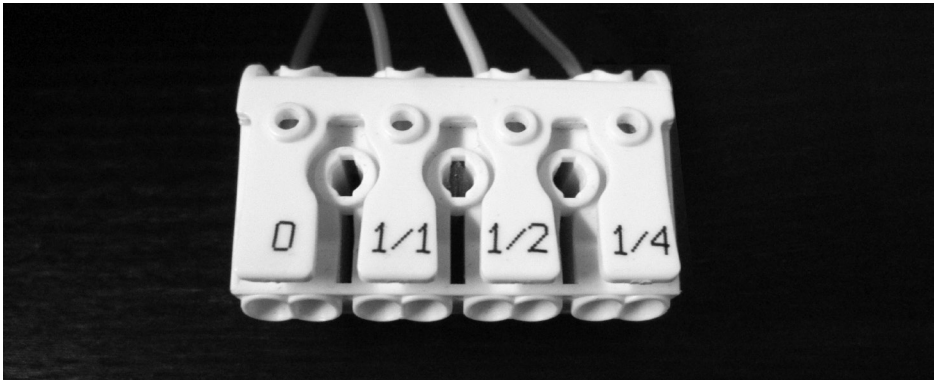
Connecting the speakers

100V technology

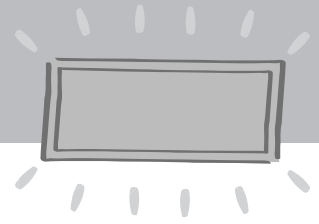


Amplifier power must be equal higher than total power of all speakers

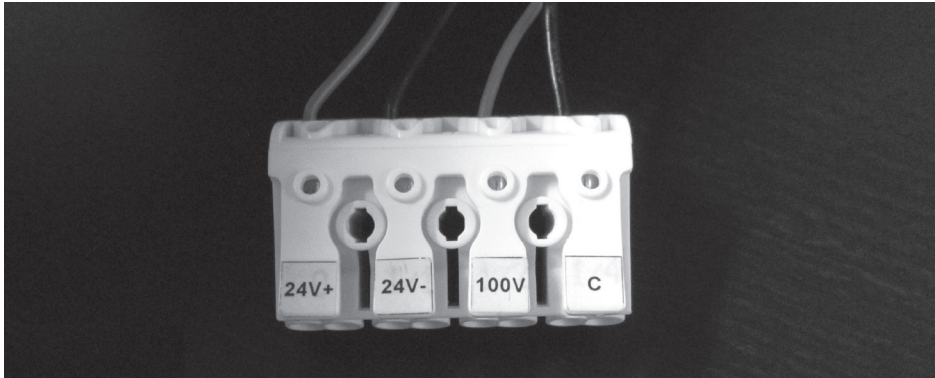
Connecting the SM6; SM6V; SMB6; SMB6V



- | | | |
|-----|---|------------------------------|
| 0 | → | Common 100V speaker wire |
| 1/1 | → | 6W 100V speaker connection |
| 1/2 | → | 3W 100V speaker connection |
| 1/4 | → | 1,5W 100V speaker connection |

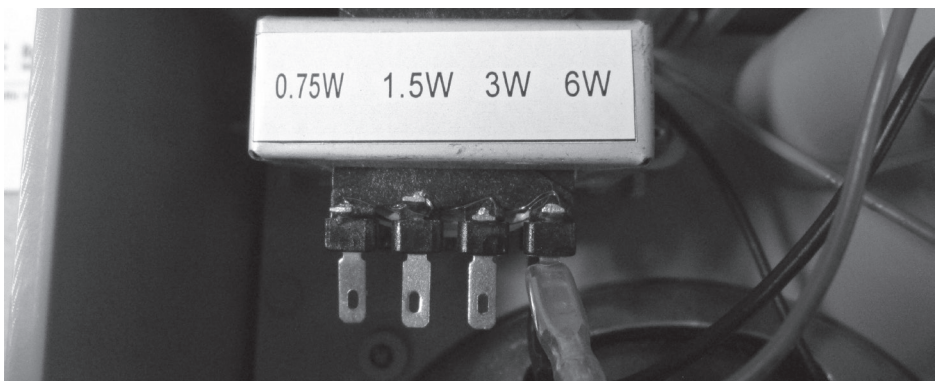


Connecting the SM6VP and the SMB6VP

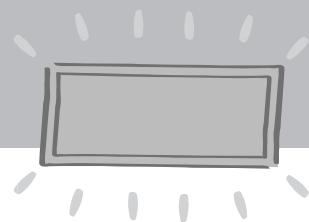


- C → Common 100V speaker connection (to amplifier)
- 100V → 100V speaker connection (to amplifier)
- 24V + → positive wire for the priority relais
- 24V - → negative wire for the priority relais

Optionally you can select the power tapping from the transformer:



The factory setting is 6W, but you select any other power tap of 3W, 1.5W and 0.75W

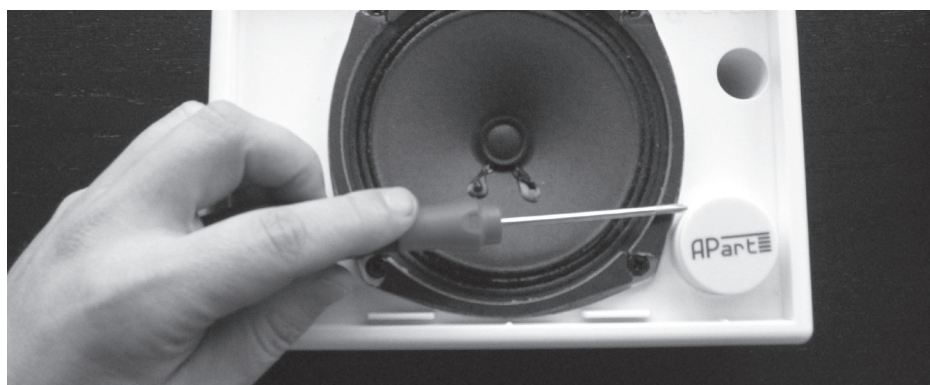


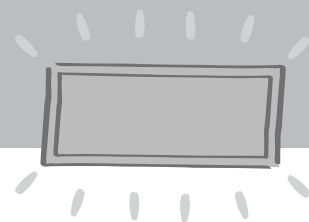
Using the volume control on the versions: SM6V(P), SMB6V(P)

1. Remove the speaker grill with the included grill removal tool:

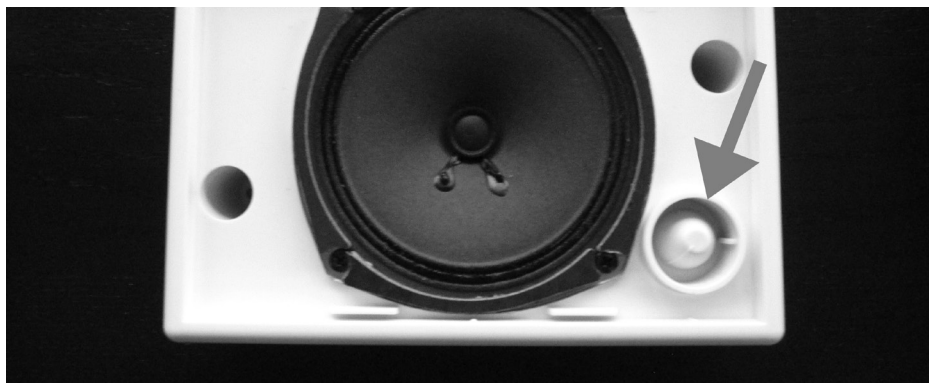


2. Once the grill is removed, you need to flip-off the volume-control cover using a flat screw driver.



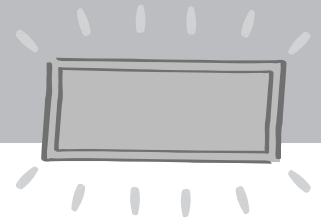


3. Change the volume to your desired level:



4. Remount the volume knob cover

5. Remount the grill by gently pushing it back into place, avoid using too much force in the centre of the grill to avoid grill deformation



Mounting the SM6, SM6V and SM6VP models to a flat surface

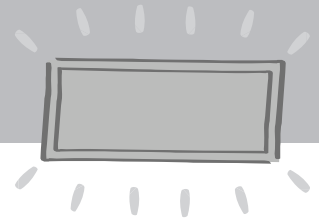
1. Remove the speaker grill with the included grill removal tool:



2. Mark the mounting holes on your mounting place

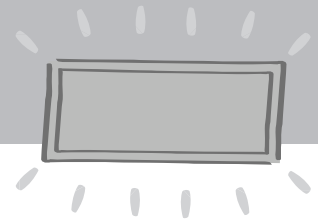


3. Drill holes and fix the SM range speaker to your mounting place
4. Remount the grill by gently pushing it back into place, avoid using too much force in the centre of the grill to avoid grill deformation

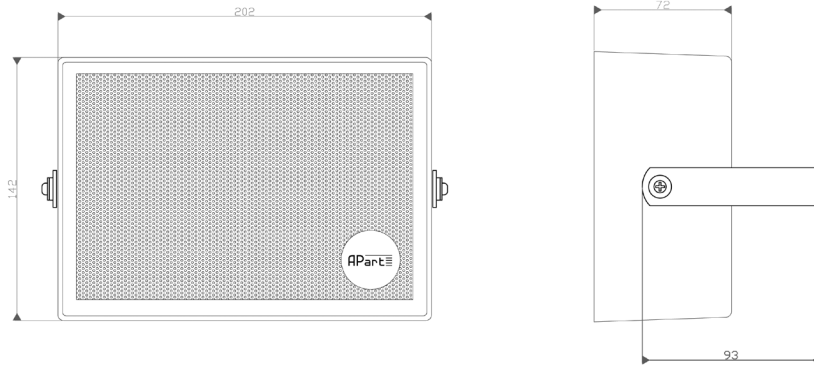


Specifications

Type	SM6 all versions
Woofer	5inch, paper
Shape	Rectangular
Rated power RMS	6W
Transformer taps	6W, 3W, 1.5W
Frequency response (-10dB)	200Hz to 20kHz
SPL1W / 1m	92dB
SPL1m / max rated power	99dB
Dispersion at 1kHz, 4kHz, 8kHz	180°, 80°, 40°
Color	White or grey
Chassis type	ABS
Grill construction	Metal
Dimensions	202x142x72mm
Max wire size diameter	2,5mm ²
Net weight	From 0.8kg to 1kg
Gross weight	From 0.9kg to 1.1kg



Technical drawing with measurements



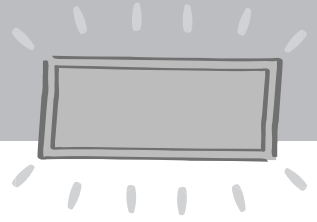
* bracket is included with the SMB6 versions only.

Warranty info

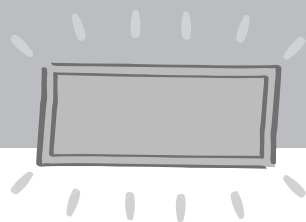
APart-Audio warrants this product to be free of defects in material and workmanship for a period of one year for parts and for a period of one year for labor from the date of original end-user purchase. This warranty is valid only for the original end-user and cannot be transferred.

During the warranty period APart-Audio or one of its authorized service partners shall either repair or replace any product, free of charge, that proves to be defective on inspection by APart-Audio or its authorized service representative.

This warranty does not include, damages or product faults due to abuse, misuse or faulty installation.



Notes



ANY SUGGESTION?

***They are well appreciated and eventually rewarded!
Send your ideas or suggestions to***

suggestions@apart-audio.com

Company names, product names, and names of formats etc. are the trademarks or registered trademarks of their respective owners.

© 2010 APart-Audio specifications subject to change without notice.

developed by

**Audioprof nv
Industriepark Brechtsebaan 8 bus 1
2900 Schoten
Belgium**

